



**M
E
D
I
C
A
L**

BASE CABINETS

WALL CABINETS

TALL CABINETS

SPECIALTY

RCI

Pacific Cabinets, Inc.

(800) 254-5546 • FAX: (208) 962-3038
PO Box 81 • Ferdinand, ID 83526-0081
info@pacificcabinets.com
www.pacificcabinets.com



W e l c o m e t o P C I . . .



Steve Frei, President/CEO

Message from the President

Pacific Cabinets Inc., founded in 1979, specializes in the custom fabrication of architectural casework and millwork for medical, educational, and laboratory facilities. We designed this catalog to facilitate your selection of casework that is used specifically in medical environments. Each room is shown with typical casework, making it easy for you to select the style you want and allowing you to specify the custom sizing you need.

At PCI, **Fabricating Function with Style** is more than a marketing tagline, it describes the end product as well as the process that created it. Ferdinand, Idaho offers a lifestyle that attracts craftsmen who take pride in their work. The 50 plus employees who work here, from cabinetmakers to administrators to journeyman installers, are proud of their premium rating from AWI.

Our plant layout provides the capacity and flexibility to handle multiple fast track architectural casework projects or one of a kind custom designs. **State of the art technology** is evident everywhere you look. Anchored by a Schelling CNC beam saw, a Brandt edge-bander, and a Morbedelli CNC machining center, these machines produce efficient production cycles and unique designs while meeting exacting specifications. This versatility and efficiency lets PCI produce premium work with any size order. **Real time bar coding** of each part makes ordering replacement parts or warranty service a non-issue for our clients.

PCI knows casework for medical facilities. Save yourself time and save your clients money by teaming up with us on your next project.

At Pacific Cabinets it is what you don't see that makes the difference.

Fabricating Function With Style...

P.O. Box 81 • Ferdinand, ID 83526-0081



St. Luke's Meridian Medical Center
Meridian, Idaho



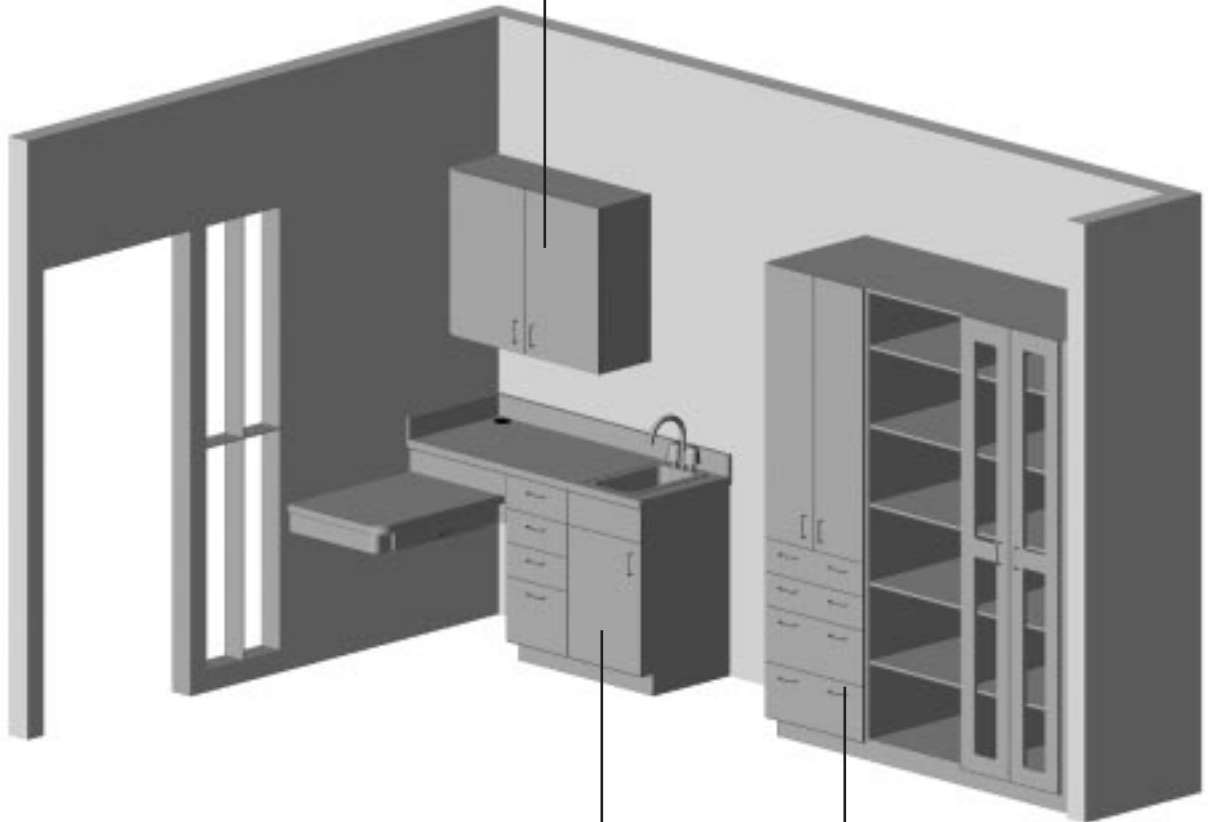
Casework Index

Wall Cabinets

(see page 16-17)

Specialty Cabinets

(see page 21-22)



Base Cabinets

(see page 11-13)

Tall Cabinets

(see page 18-20)

Common Medical Installation

Casework for exam rooms, reception areas, nurse stations, storage areas, and other medical installations are included on the following pages.

Specifying Guidelines

Where to Start

Your PCI catalog is divided into separate sections for Base, Wall, Tall, and Specialty casework. Sections are easily identifiable by the icon on the edge of each page.

1. General Information

General Fabrication details, terms, and definitions are included on pages 5-10. Specific cabinet modifiers (which must be included in the product number when specifying casework) are also included in these details.

2. Cabinet Types

Choose your cabinet type (Base, Wall, Tall, or Specialty) and select the cabinet from the appropriate section.

3. Drawers, Doors, Shelves, and Partitions

Select the number of drawers, doors, shelves, and partitions needed. Check the “General Information” section to make sure that the desired configuration is constructable.

4. Cabinet Modifiers

Refer to the “General Information” section to review options for each type of cabinet selected, including door or drawer locks, casters, etc.

Product Number

Specify your casework using the product number consisting of the information from Steps 1-4. Refer to page 4 for a description of our product numbering system.

Using Spec-Op

Spec-Op is designed to make specifying a cabinet very easy but yet make the specification tight enough to assure that you are getting the product and the quality that you expect. Take a few minutes to fill out and send in the spec check sheet and you will receive a copy of a specification that will match your request.

Call PCI

Our intention in the design of this catalog is to give you some examples of cabinet styles and types to make it easier for you to show your clients possible configurations. There are numerous additional configurations and designs that PCI can manufacture. **Remember we manufacture after you place your order!** Please call us if we can help you with your custom requirements.

P r o d u c t N u m b e r s

Cabinet Type

B	Base
W	Wall
T	Tall

Quantity Designators

2	2	1	0
----------	----------	----------	----------

Number of Drawers
Number of Doors
Number of Shelves *
Number of Vertical Partitions

*Note: all shelves are adjustable unless noted otherwise.

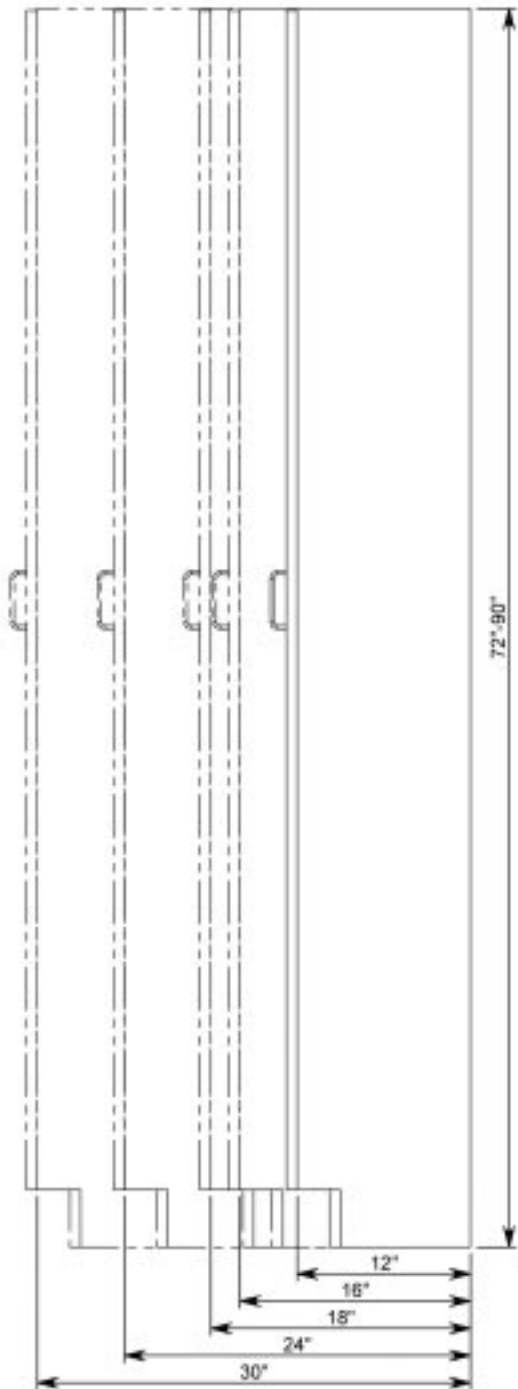
B 2 2 1 0 FT RB L

Cabinet Modifiers

C	Casters
DT	Detached Toe Kick
FD	File Drawer
FT	Finished Top
GD	Glass Inset Door
HD	High Durability Shelf
L	Door or Drawer Lock
M	Modified Cabinet
MF	Metal Frame
N	High Security Cabinet
PD	Pocket Door
RB	Removable Back
RR	Record Rack
S	Special
SL	Seismic Lip
V	Valence
WD	Wardrobe Cabinet
WL	Wall Locker

CABINET SIZES

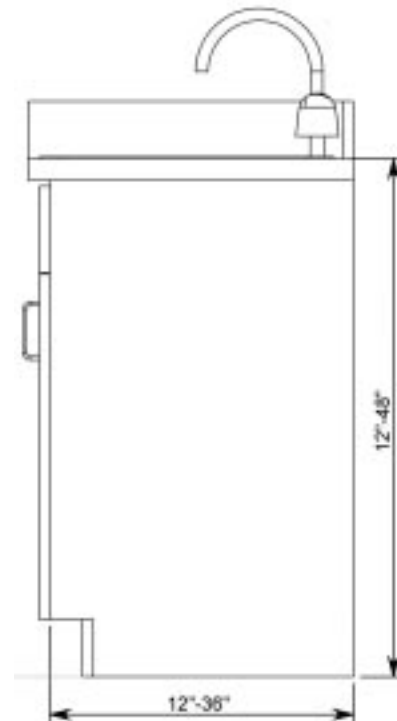
Tall Cabinet



Wall Cabinet



Base Cabinet



Note: Contact your local distributor or PCI for custom sizes

COUNTERTOP STYLES



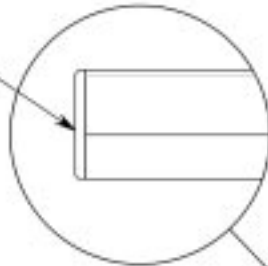
Classic



Radiused corners available



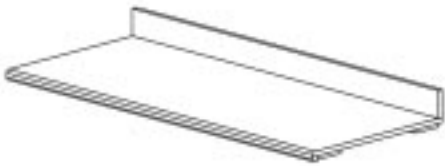
3mm PVC Edgebanding



Contemporary



Radiused corners available



Futura

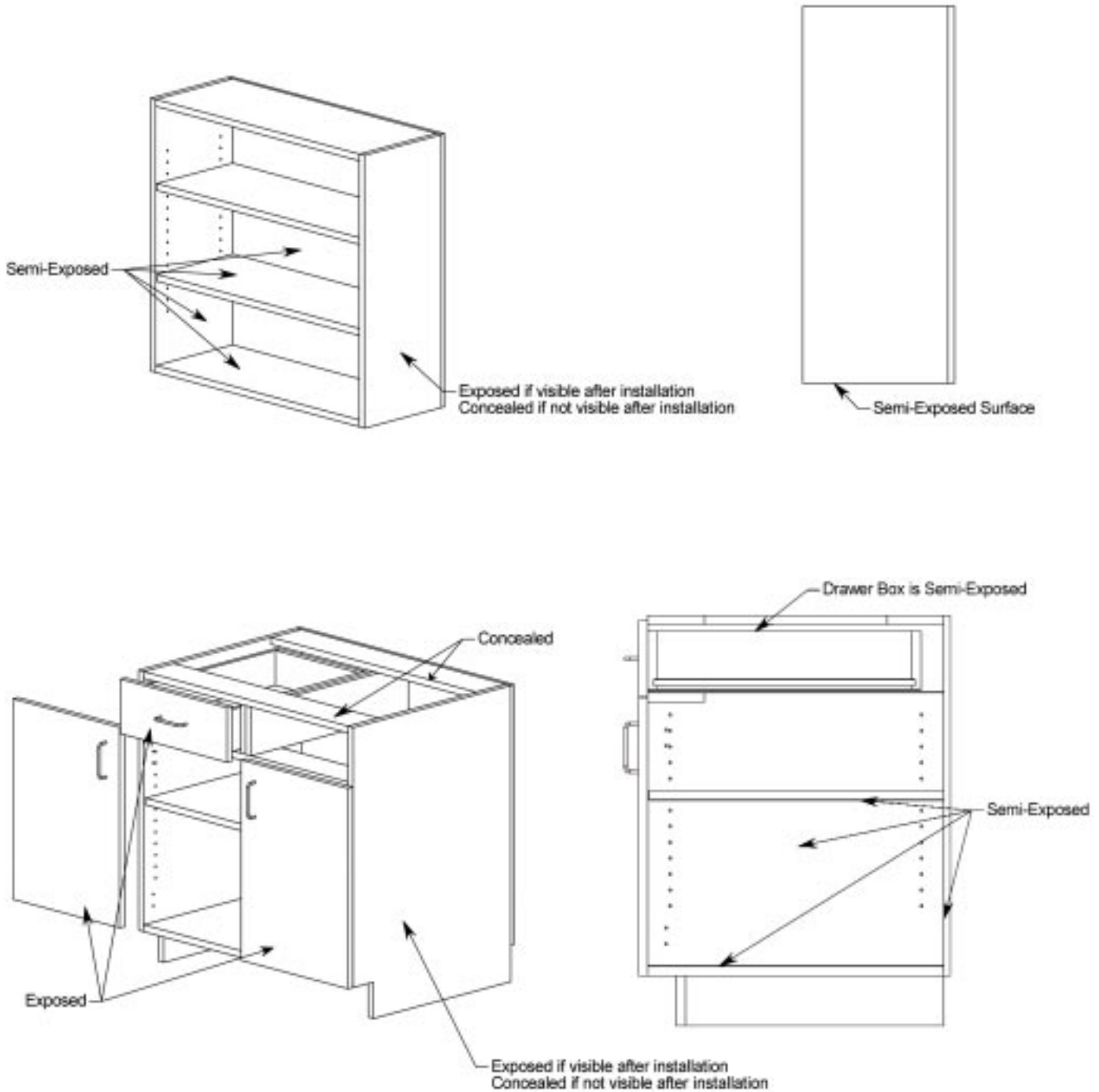


Nova



Phenolic Backer on underside of all countertops

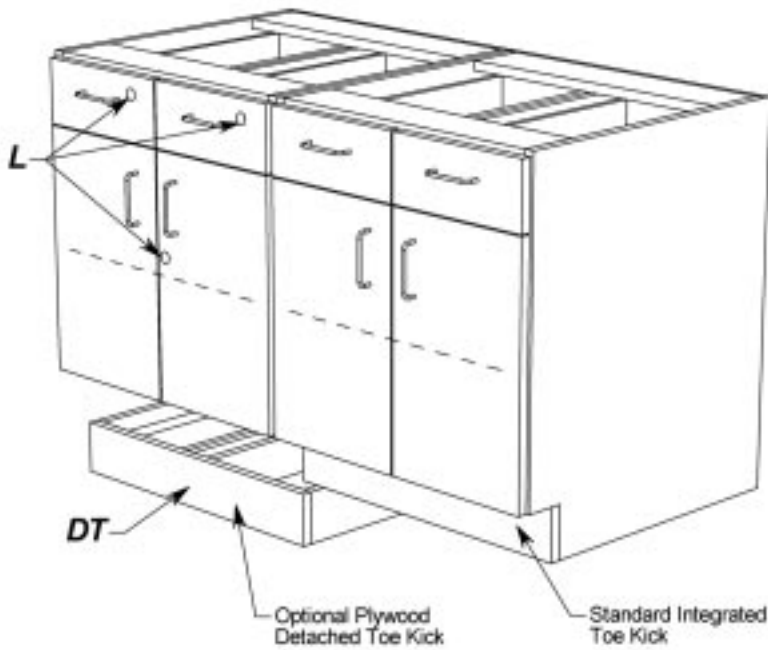
CABINET OPTIONS



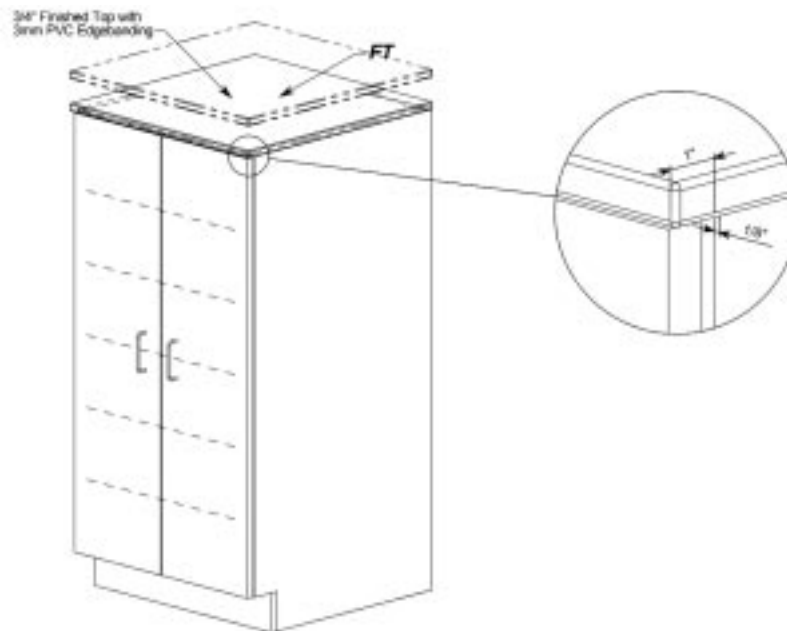
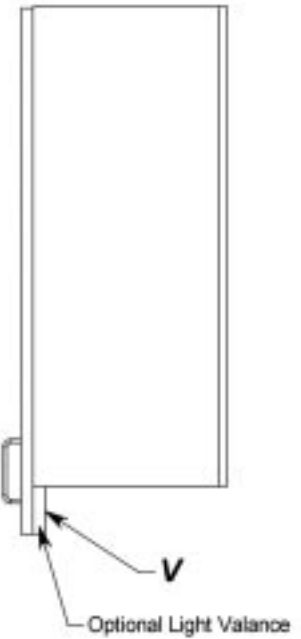
- Note:**
1. Surfaces visible after installation and with doors and drawers closed are **Exposed**
 2. Surfaces visible after installation and with doors and drawer open are **Semi-Exposed**
 3. Any other surface is **Concealed**

CABINET OPTIONS

DT and L Perspective



Valance



- Note:**
1. Cabinets 48" to 72" receive a 3/4" finished top
 2. Base cabinets under 48" tall receive countertop

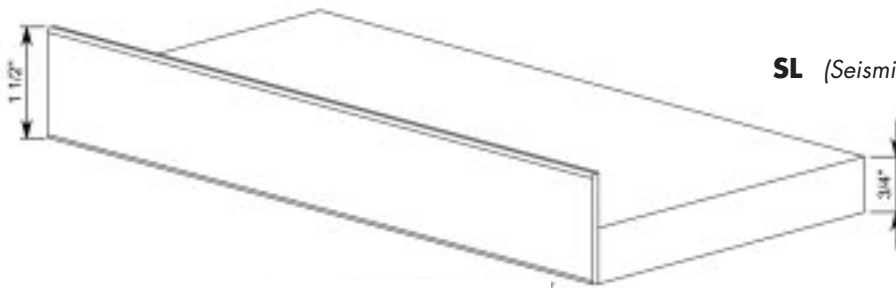
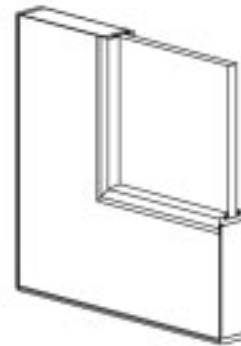
SHELVES & DOORS

Glass Door

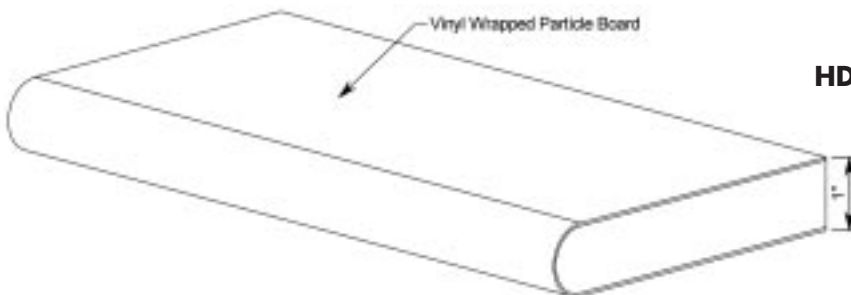


GD
Glass Inset Door

Glass Door (Section A)



SL (Seismic Lip Adjustable Shelf)

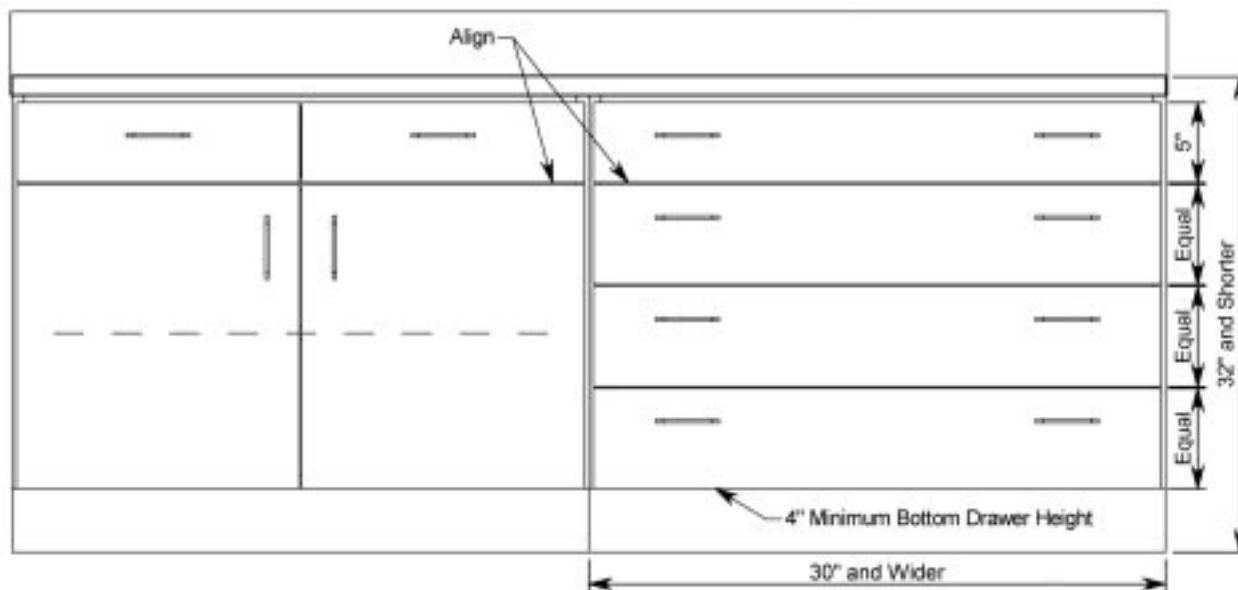


HD (High Durability Adjustable Shelf)

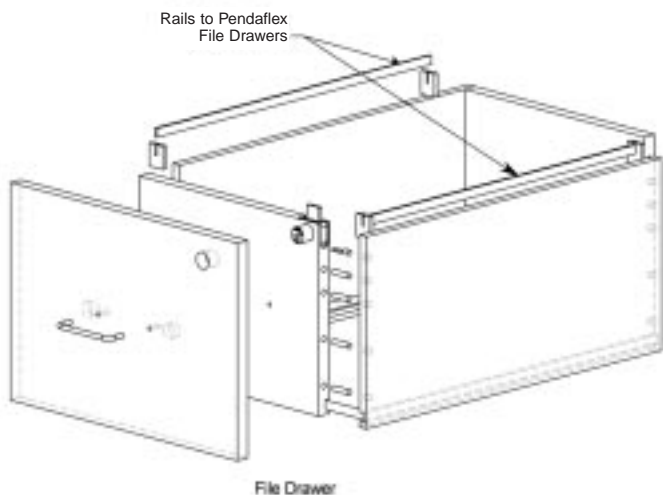
- Note:**
1. Only front edge on shelves will be edgebanded, unless specified
 2. Glass Doors over 60" tall require center rail

DRAWERS

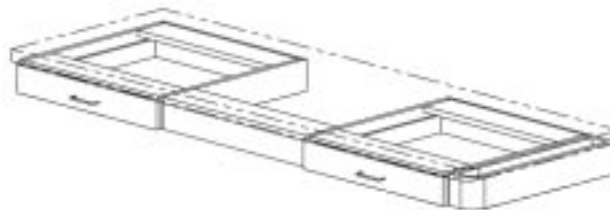
Top Drawer Alignment



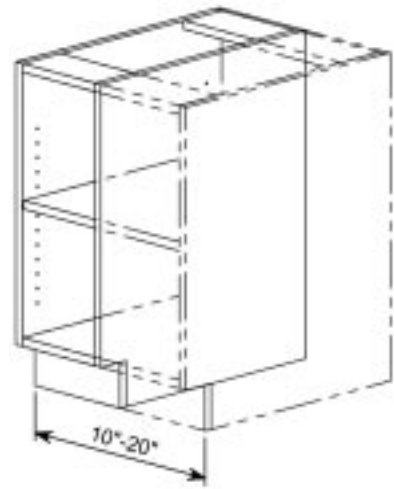
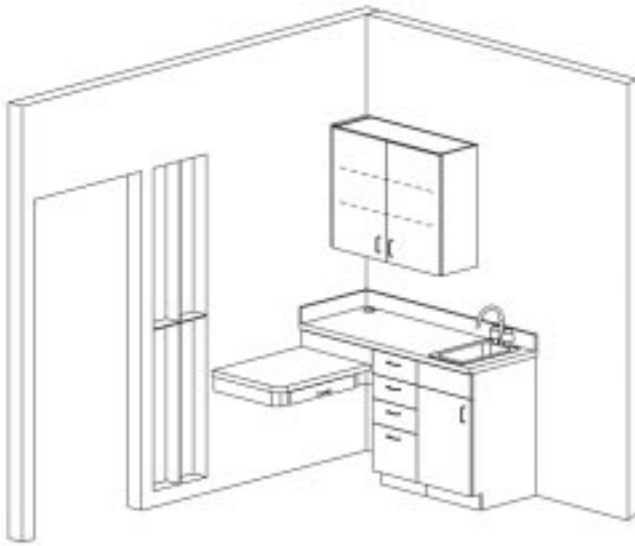
File Drawer



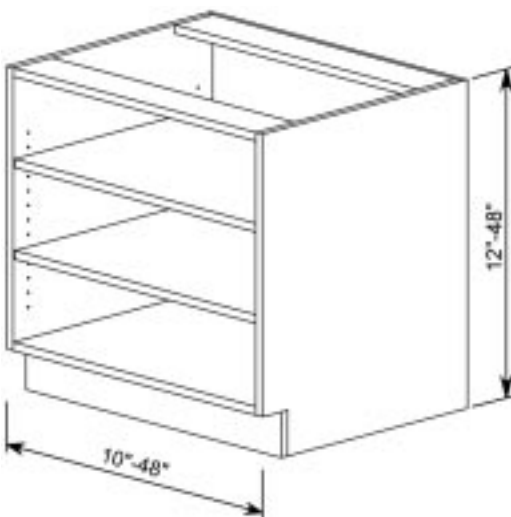
Pencil Drawers



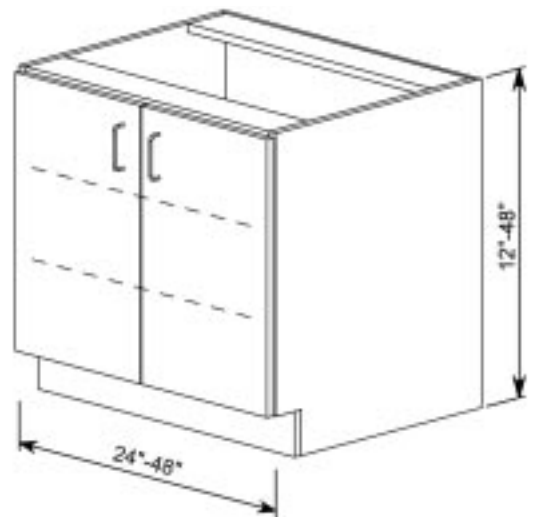
- Note:**
1. Drawers less than 30" wide receive one pull. Drawers over 30" wide receive two pulls.
 2. The top drawer height for cabinets 32" and shorter is 5". The top drawer height for cabinets taller than 32" is 6".
 3. All other drawers are equal height, unless they are file drawers. Then see file drawer detail. U.N.O.
 4. File drawers and file cabinets are only available for standard and legal size Pendaflex files.
 5. Locks are optional and need to be specified.



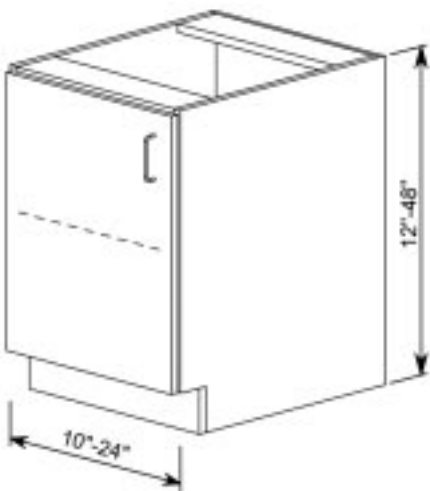
B0010



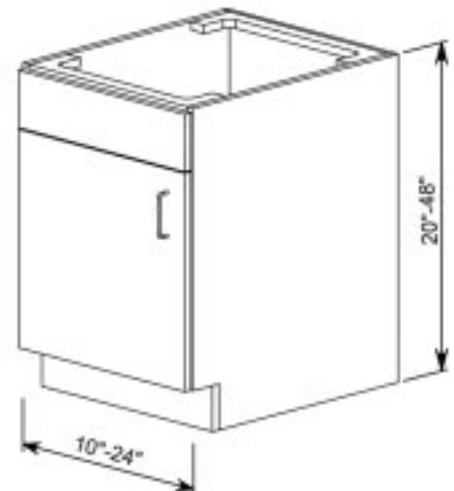
B0020



B0220

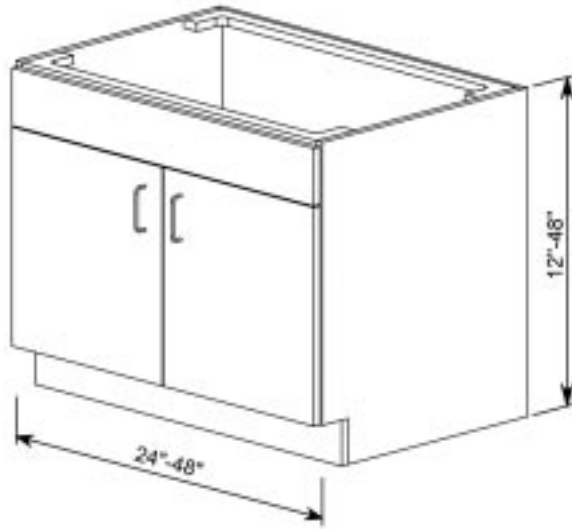


B0110

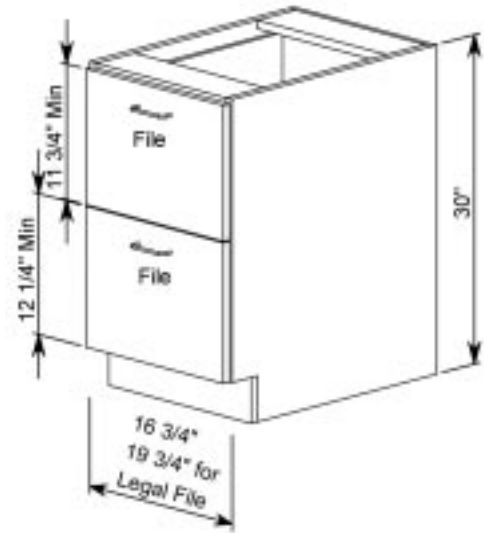


B SNKS

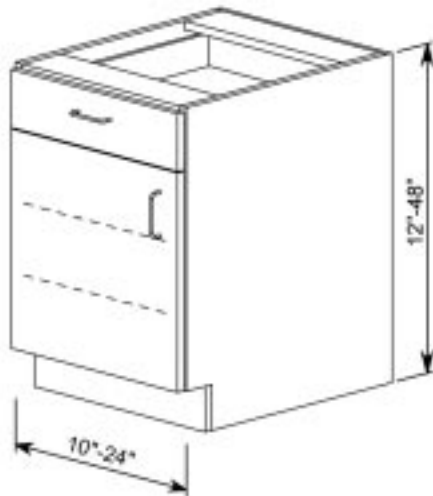
Note: Shelves over 32" will be 1" material



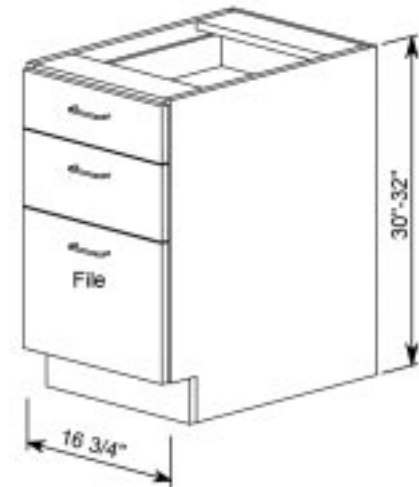
B SNK



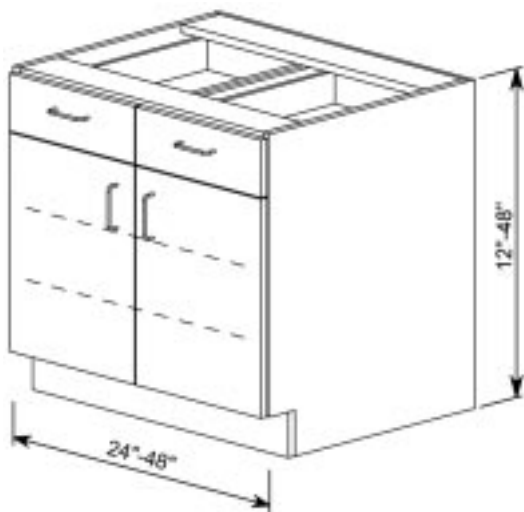
B200FD



B1120



B300FD



B2220



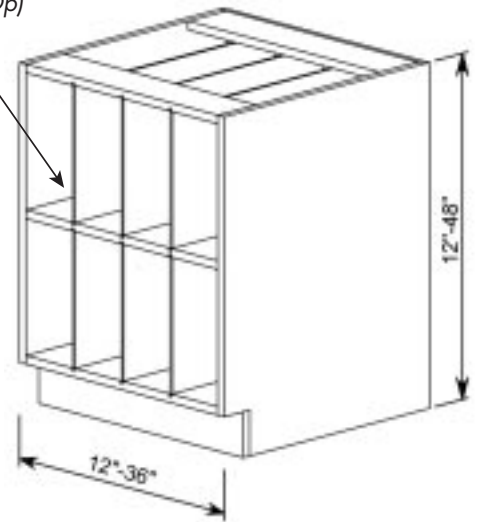
B4000

Note: Sink cabinets need to be a minimum 4" wider than the sink

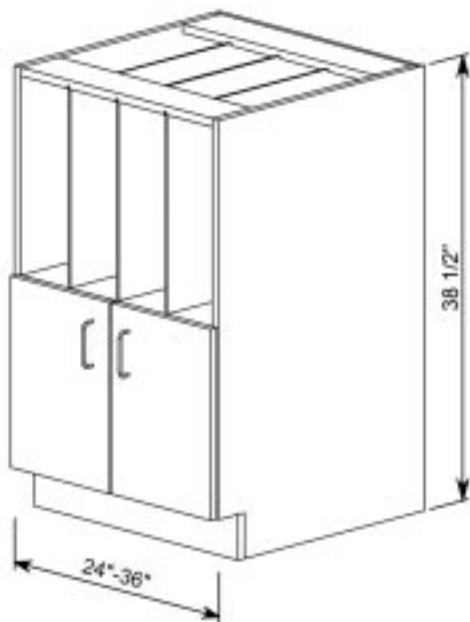
*Plexiglass or hardboard dividers available
(see Spec-Op)*



B6000S



B0010S



B0200S



B0020FT



Pullman Medical Center
Pullman, Washington

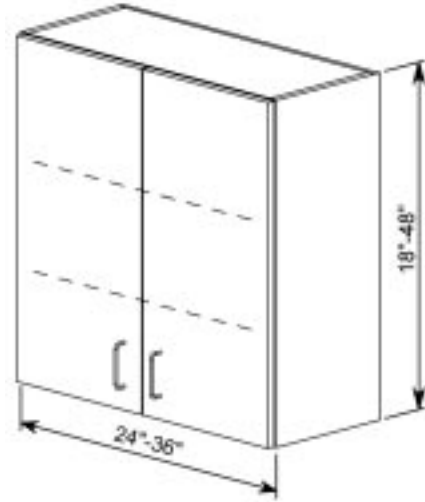


Valley Medical Center
Lewiston, Idaho



Kadlec Medical Center
Richland, Washington





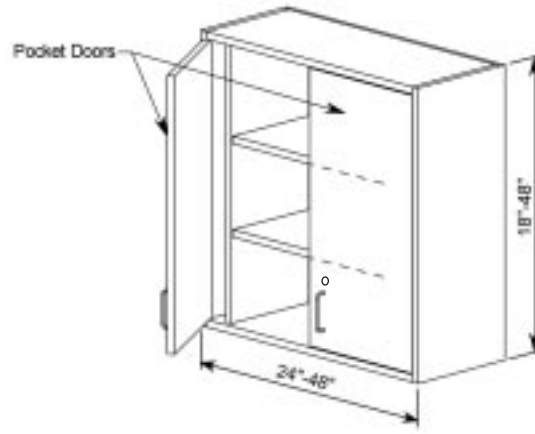
W0220



W0020

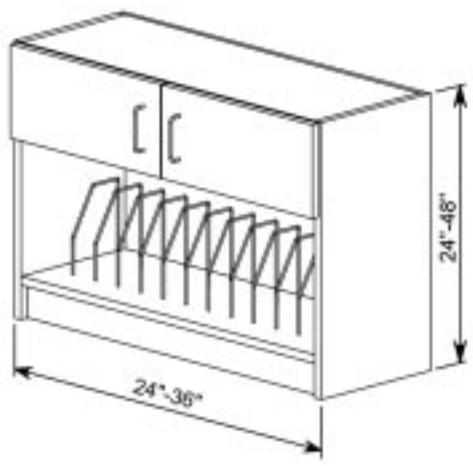


W0120

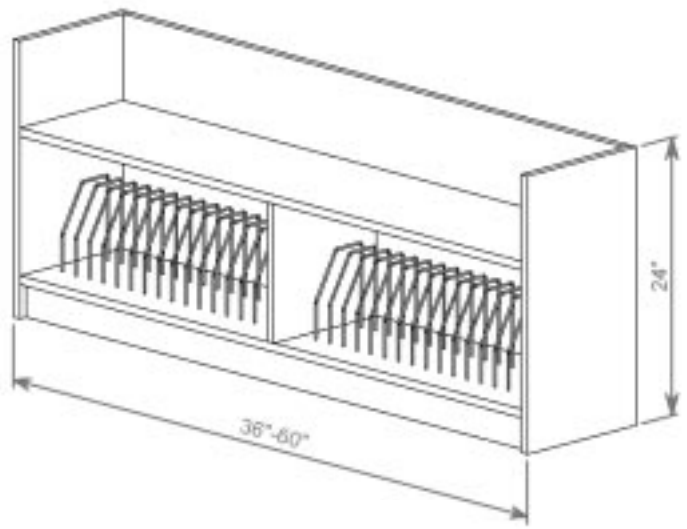


W0220PD

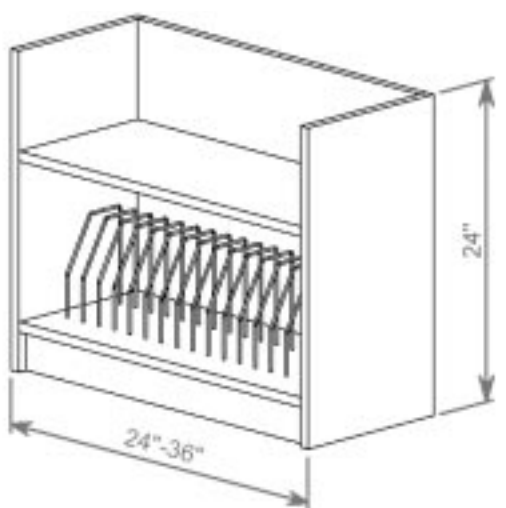
- Note:**
1. Contact your local distributor or PCI for custom sizes
 2. Pocket door cabinets depth and width are dependent upon each other
 3. Locking cabinets designed with HIPAA requirements in mind



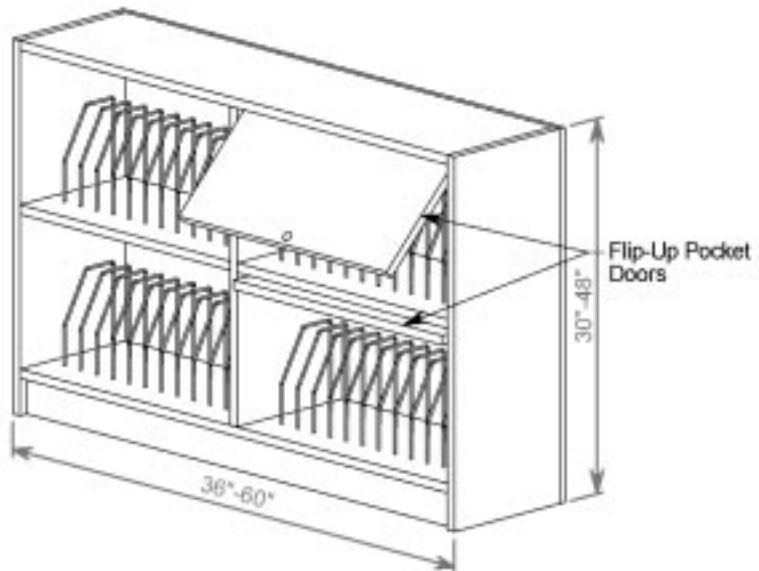
W0200RRV



W0011RRV

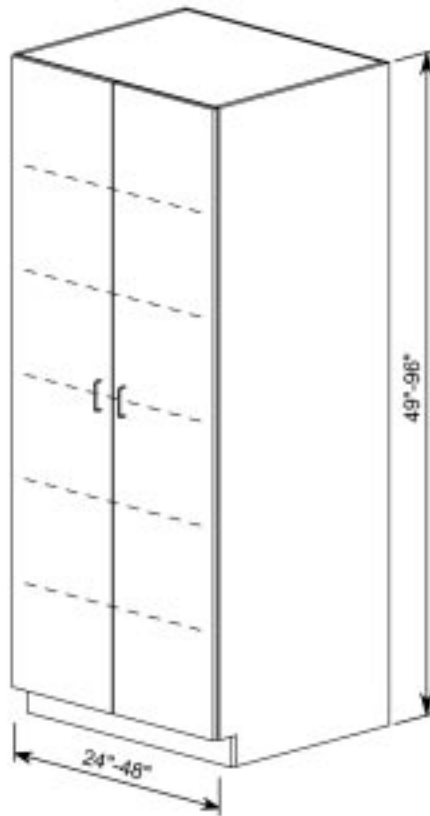


W0010RRV

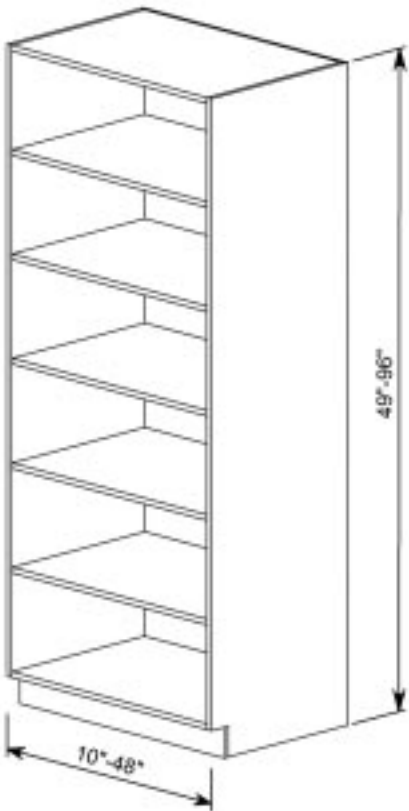


W0211PDRRV

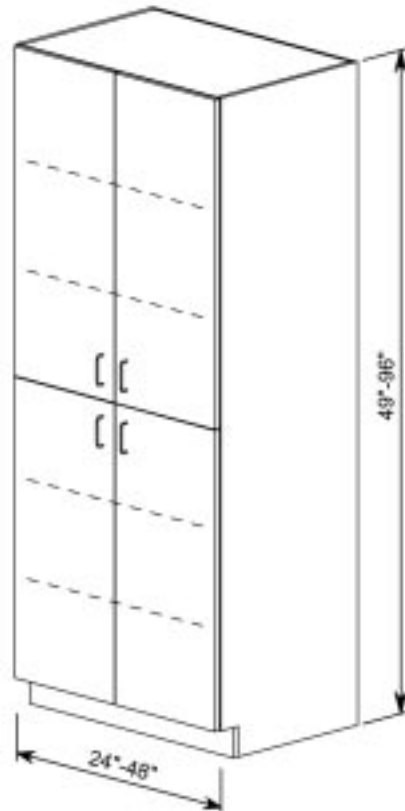
- Note:**
1. We recommend using 3mm PVC edgebanding on front edges of these cabinets
 2. Metal dividers are removable
 3. Locking cabinets designed with HIPAA requirements in mind



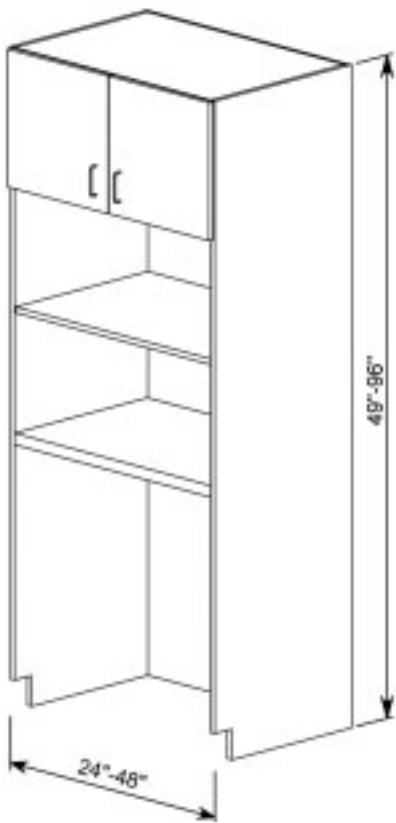
T0250



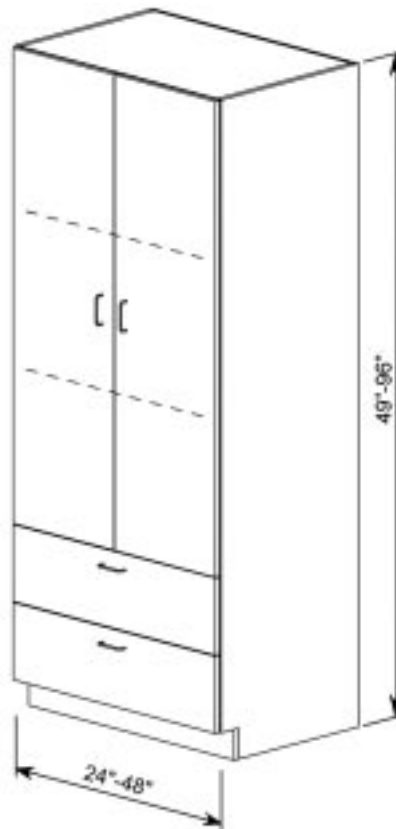
T0050



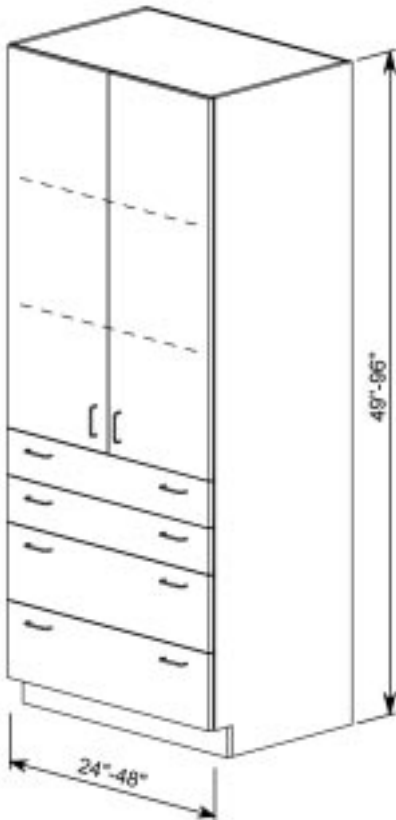
T0441



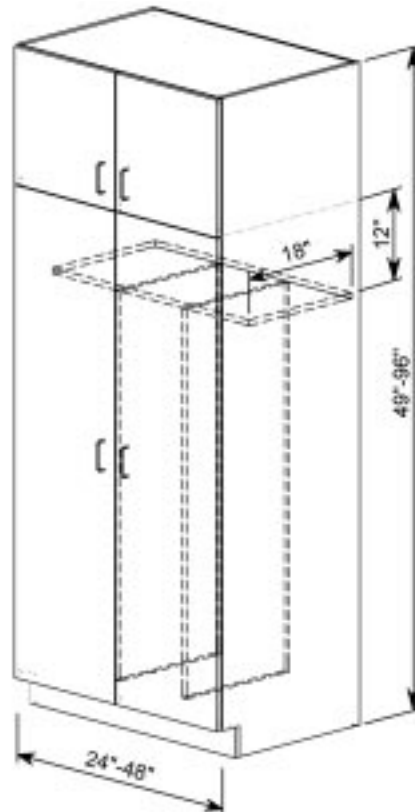
T0222S



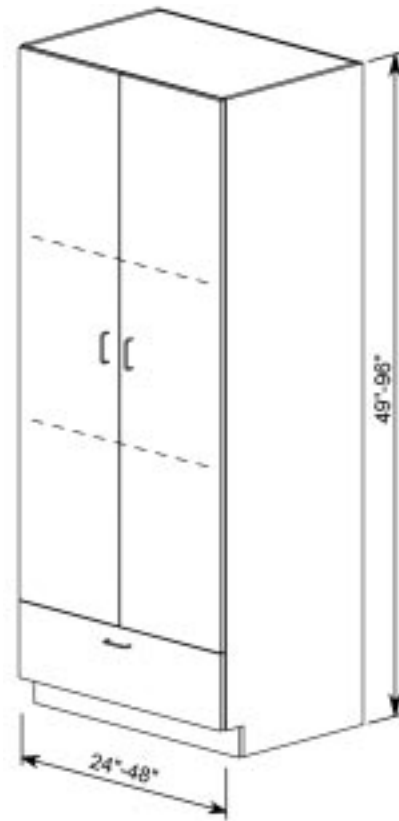
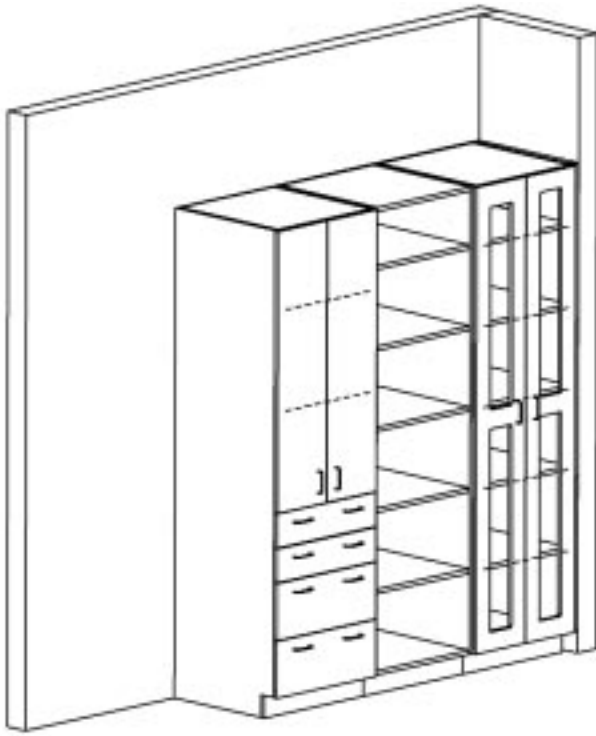
T2221



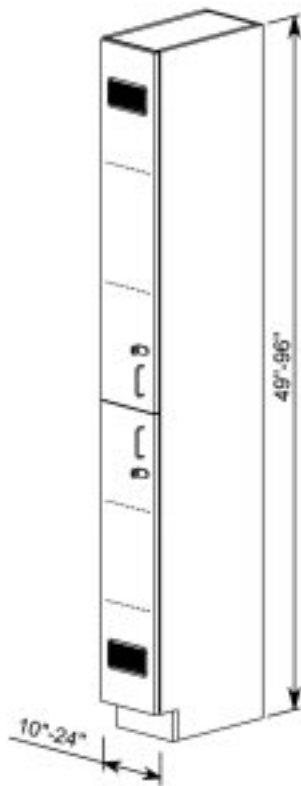
T4221



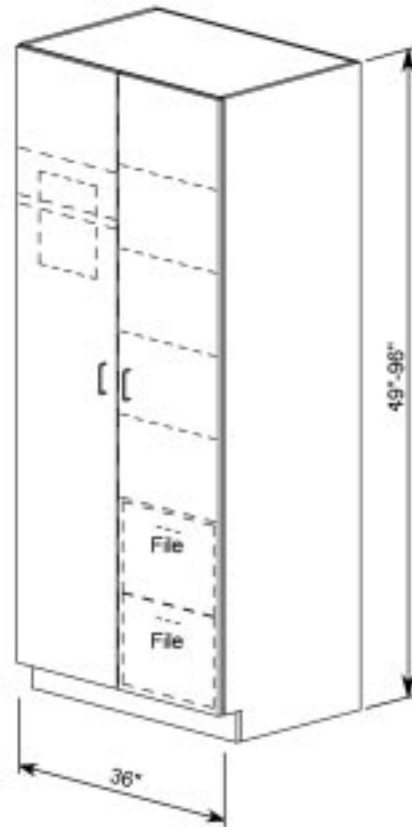
T0412S



T1220

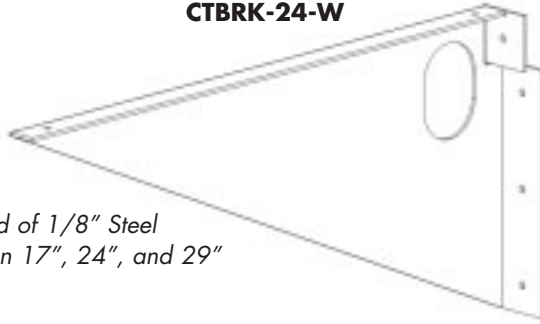


T0240WL
Ventilated Locker



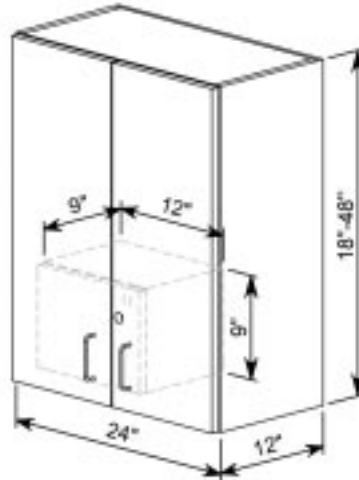
T2241WD

Countertop Support Bracket CTBRK-24-W



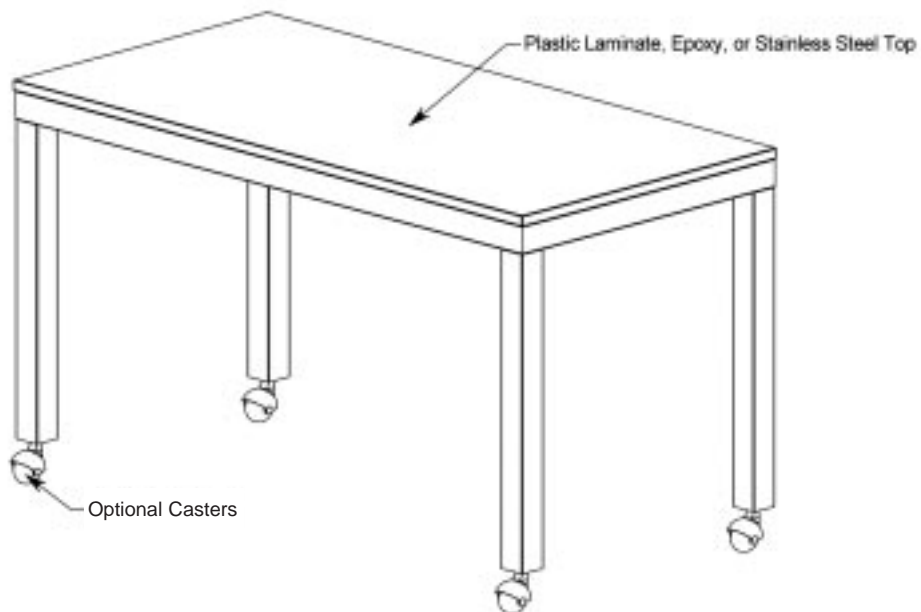
Constructed of 1/8" Steel
Available in 17", 24", and 29"

Security Cabinet - Typical Narcotics Storage



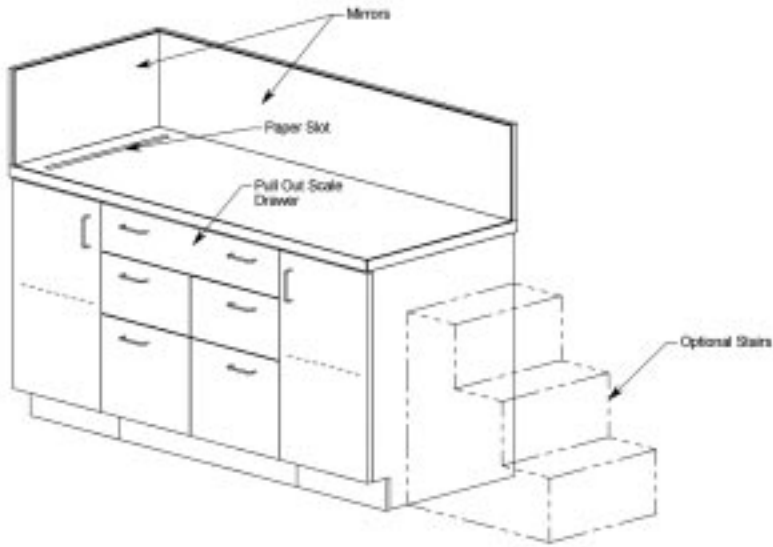
Locks Keyed Separate

Mobile Work Table

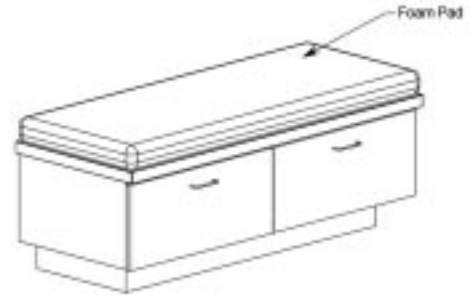


- Note:**
1. Countertop brackets available in almond, grey, or white to match interior cabinet color (see back cover)
 2. Countertop brackets will be necessary for any countertop span greater than 48"
 3. Table available in powder coated steel or stainless steel frame

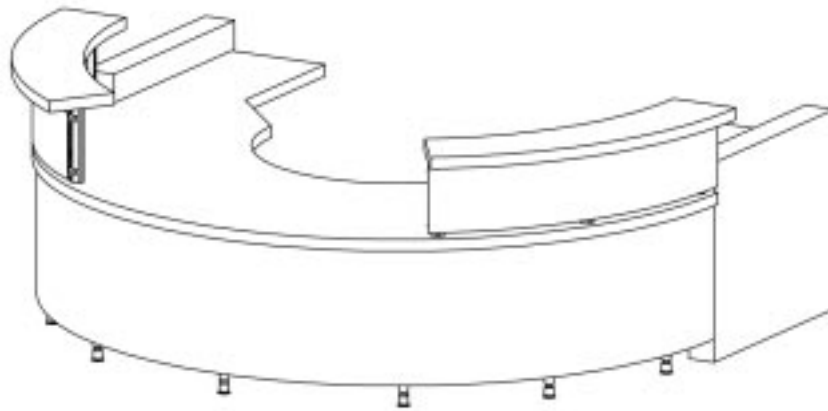
Pediatric Exam Table



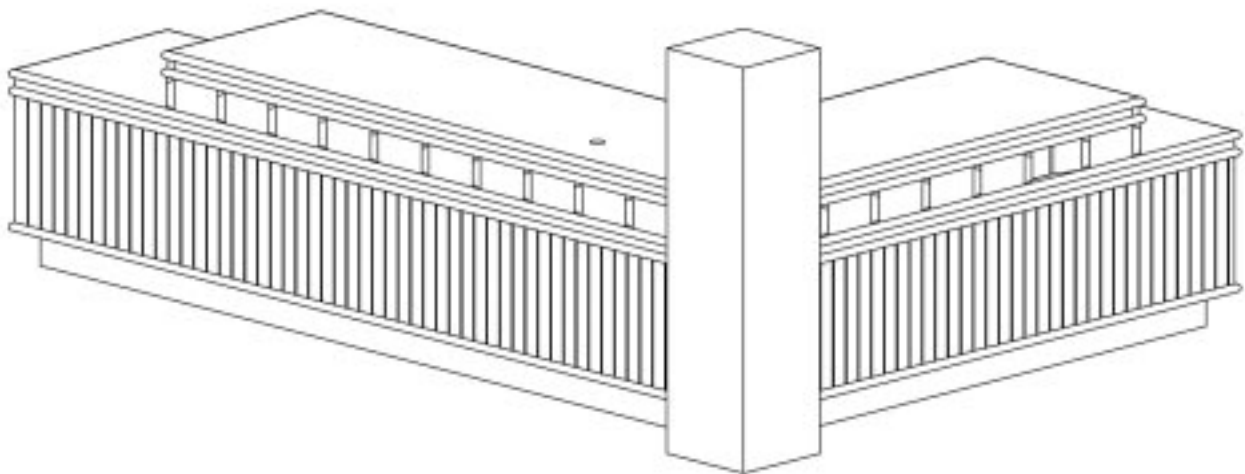
Pediatric Bench



Custom Nurse Station



Custom Registration Desk



SPECIALTY

PACIFIC CABINETS, INC SPECIFICATION OPTIONS

Although PCI does not limit our customers' options by setting parameters on their specifications, this form should simplify your efforts to specify your project. Please fill out the Spec-Op form and mark a preference in each category. Tear out this form and fax it to Pacific Cabinets, Inc. at 208-962-3038. This form is also available on our web site in PDF format at www.pacificcabinets.com.

Company _____ Architect _____
Name _____ Attention _____
Title _____ Address _____
Address _____ City _____ State _____ Zip _____
City _____ State _____ Zip _____ Phone _____ Fax _____
Phone _____ Fax _____ Describe Project _____
Email Address _____
Project Name _____ Include seismic code requirements: yes no
Project Location _____

SPEC-OP CATEGORIES *(Refer to www.pacificcabinets.com for additional category information)*

CABINET CORE MATERIAL

- ___ Industrial Grade Particle Board *
- ___ Medium Density Fiberboard
- ___ Moisture Resistant MDF (Medex) at sink areas

DIVIDERS

- ___ Plexiglass *
- ___ Hardboard

FACE EXTERIOR SURFACE

- ___ GP28 High Pressure Laminate *
- ___ Chemical Resistant Laminate
- ___ Thermally Fused Laminate

HINGE AND CABINET FACE STYLE

- ___ Five Knuckle Hinge, Reveal Overlay *
- ___ Concealed 125 Degree Hinge, Full Overlay
- ___ Concealed 170 Degree Hinge, Full Overlay

CABINET BODY FRONT EDGING

- ___ .020 PVC Edge *
- ___ 3mm PVC Edge

DOOR AND DRAWER EDGING

- ___ 3mm PVC Edge *
- ___ .020 PVC Edge

DOOR AND DRAWER PULLS

- ___ Metal Wire, Dull Chrome *
- ___ ABS Plastic, Semi Recessed
- ___ Aluminum Wire (MRI rooms non ferrous)

DRAWER SLIDES (STANDARD DRAWERS)

- ___ Standard Extension 100 lb. Load Rated, *
Epoxy Powder Coated Steel (File drawers
100 lb. Load Rated full extension slides)
- ___ Full Extension 100 lb. Load Rated,

* Most Commonly Specified

PACIFIC CABINETS, INC SPECIFICATION OPTIONS (PAGE 2)

DRAWER SLIDES (FILE DRAWERS)

- Full Extension 100 lb. *
- Full Extension 150 lb.

CLOSED CABINET INTERIOR

- Thermally Fused Melamine Laminate *
- GP 28 High Pressure Laminate

OPEN/GLASS DOOR CABINET INTERIOR

- Thermally Fused Melamine Laminate *
- GP 28 High Pressure Laminate

WALL UNIT BOTTOM

- Thermally Fused Melamine Laminate *
- GP 28 High Pressure Laminate

CABINET SHELF EDGES

- .020 PVC Edge (front edge only) *
- .020 PVC Edge (all four edges)
- 3mm PVC Edge (front edge only)
- 3mm PVC Edge (all four edges)

MISCELLANEOUS WALL HUNG SHELF EDGES

- .020 PVC (exposed edges) *
- 3mm PVC (exposed edges)

LOCKS

- Pin Tumbler
- Keyed to building system

COUNTERTOP CORE MATERIAL

- Industrial Grade Particleboard *
- Medium Density Fiberboard
- Moisture Resistant MDF (Medex)
Recommended for Sink Areas

COUNTERTOP SURFACE MATERIAL

- GP 50 High Pressure Laminate *
- Chemical Resistant Laminate

COUNTERTOP STYLE

- Classic *
- Nova
- Futura
- Contemporary
- Radiused Corners

COUNTERTOP SUPPORT BRACKET

- 17"
- 24"
- 29"

Upon receipt of this Spec-Op order form, PCI will send you a specification that will correspond with your project requirements.

CASEWORK/MILLWORK PREDESIGN CONSIDERATIONS PACIFIC CABINETS, INC.

We at Pacific Cabinets, Inc. believe that addressing these considerations during pre-design will save you time, better match the specified product with your client's needs, and make your casework and millwork part of the budget solution rather than part of the problem.

Consider the:

- Degree of wear or abuse the casework and millwork will receive
- Potential exposure to harsh chemicals and/or acids
- Balance needed between durability and appearance
- Presence of abnormal moisture or absence of normal moisture
- Presence of a wide range of temperatures
- Casework design relationship to the overall scope of the building
- Casework/millwork cost relationship to client budget
- Impact of new products, materials, and/or construction methods
- Importance of casework/millwork manufacturer credentials
- Need to insure that the finished product matches the specifications

PCI Professional Checklist for AWI Premium Rated Casework

- Phenolic backer on the underside of all countertops
- Cabinet panels balanced to prevent warping
- Industrial particle board or MDF substrate under high pressure laminate
- Drawer bottoms captured on four sides by dado construction
- Wood grain on cabinets sequenced vertically to align grain patterns (including drawer fronts)
- Drawer joints dovetailed or doweled together

For a complete list of differences in cabinet grades, call PCI or consult the AWI Quality Standards

Pacific Cabinets is a premium certified AWI manufacturer and has the experience and technology to assist you in writing specifications using the latest materials, construction methods, and designs.

I n d e x

Casework Index	2
Specifying Guidelines	3
Product Numbers	4
General Information	
<i>Cabinet Sizes</i>	5
<i>Countertop Styles</i>	6
<i>Cabinet Options</i>	7-8
<i>Shelves & Doors</i>	9
<i>Drawers</i>	10
Base Cabinets	11-13
Wall Cabinets	16-17
Tall Cabinets	18-20
Specialty	21-22
Specification Options	23-24
Casework / Millwork Predesign Considerations	25
Color Samples	Back Cover



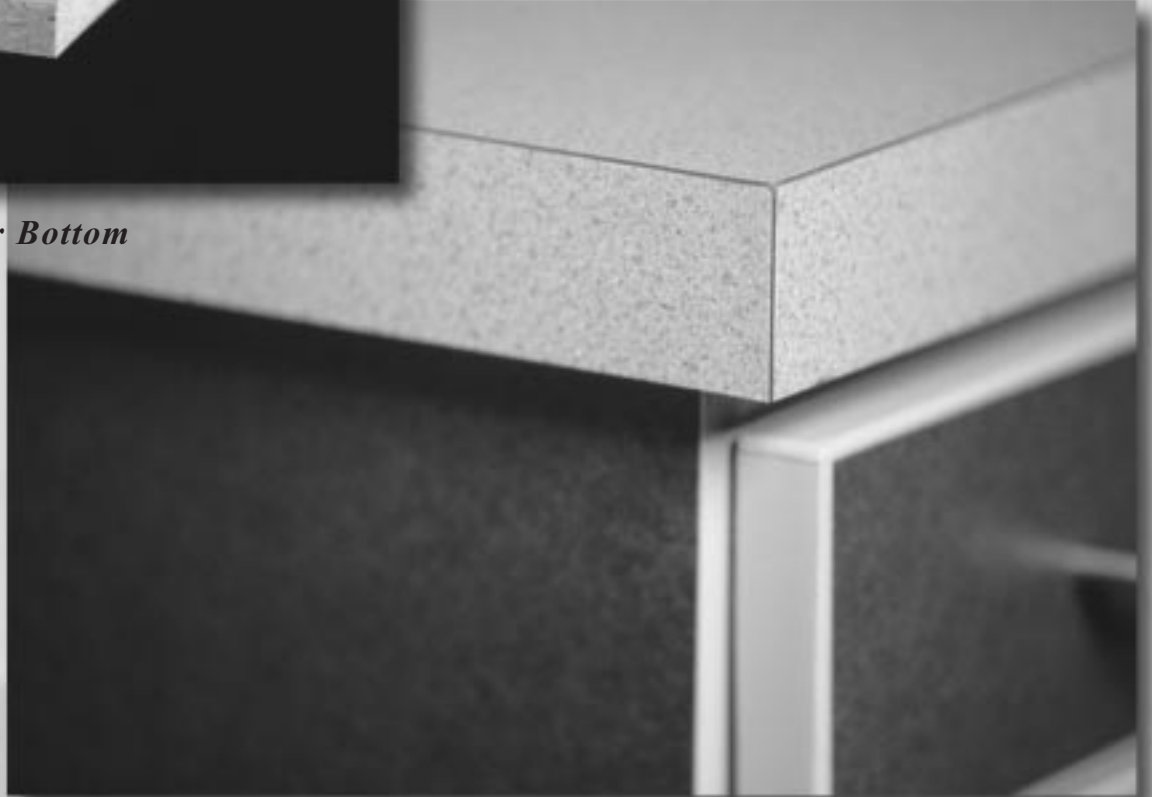
Futura Countertop



Dado for Drawer Bottom



Classic Countertop





Phenolic Backer



Concealed Hinge, Full Overlay



Five Knuckle Hinge, Reveal Overlay



Horizontal Boring / Dowel Insertion



Countertop Saw



*Point to Point
Machining Center*



Inside PCI Facility



Automatic Edge Bander

STANDARD COLOR SAMPLES



BLACK

ALMOND

GREY

WHITE

Choose from any of the above color samples for:

- Melamine Surfaces (Cabinet Interior Surfaces)
- PVC Surfaces (Edges of all Casework & Cabinet Doors)

Custom colors are available upon request.
Contact PCI to discuss colors for your next project.

Pacific Cabinets, Inc.

(800) 254-5546 • FAX: (208) 962-3038 • PO Box 81 • Ferdinand, ID 83526-0081
info@pacificcabinets.com • www.pacificcabinets.com